

19th Annual

PEPTALK 2020

THE PROTEIN SCIENCE WEEK

January 20-24
2020

**Hilton San Diego
Bayfront**

San Diego, CA

1,300
Global
Participants

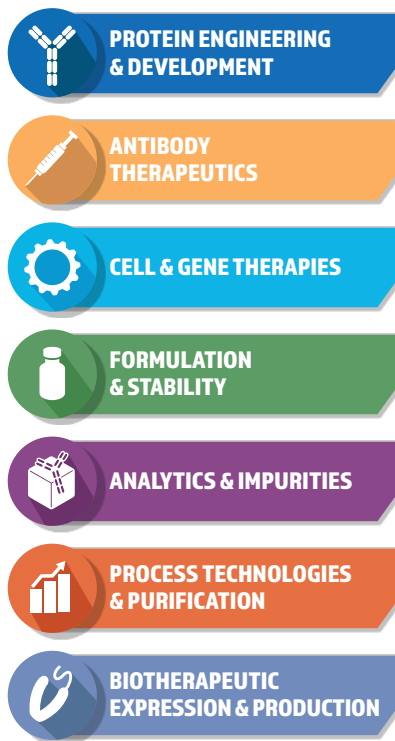
100+
Sponsors &
Exhibitors

81%
Biotech/CRO
/Pharma



#PTK20 **CHI-PepTalk.com**

INQUIRE ABOUT SPONSORSHIP



PART A Mon. - Tue. AM Jan. 20-21	PART B Tue. PM - Wed. Jan. 21-22	PART C Thu. - Fri. Jan. 23-24
Recombinant Protein Therapeutics	Lead and Candidate Selection for Therapeutic Proteins	Deep Sequencing and Single Cell Analysis for Antibody Discovery
Engineering Next-Generation Cancer Immunotherapies	Antibody-Drug Conjugates	Bispecific Antibody Therapeutics
Vector Design and Development for Gene and Cell Therapies	Gene Therapy Analytics and Manufacturing	Cell Therapy Analytics and Manufacturing
Optimizing Biologics Formulation Development	Lyophilization and Emerging Drying Technologies	Protein Aggregation and Emerging Analytical Tools
Characterization of Biotherapeutics	Detection and Characterization of Particulates and Impurities	Protein Aggregation and Emerging Analytical Tools
Bioprocess Data Management and Analysis	Protein Purification and Recovery	Higher-Throughput Protein Production and Characterization
Engineering Genes, Vectors, Constructs, and Clones	Recombinant Protein Expression and Production	Optimizing Expression Platforms

KEY MARKETING DEADLINES



The floor plan shows a restaurant layout with a central 'Main Entrance' at the bottom. The layout is divided into several sections by walls and pillars. The top section contains a long row of tables, mostly 2x2 and 2x1, with some 2x3 tables. The middle section contains a large 2x2 grid of tables, with some 2x1 tables and some 2x3 tables. The bottom section contains a long row of tables, mostly 2x2 and 2x1, with some 2x3 tables. The tables are color-coded: red for 2x2, green for 2x1, and grey for 2x3. The chairs are represented by small icons. The plan is labeled with table numbers and dimensions.

Table Number	Dimensions	Color	Notes
224	2x2	Red	
222	2x2	Green	
220	2x2	Green	
216	2x2	Red	
214	2x2	Green	
212	2x2	Red	
208	2x2	Red	
206	2x2	Green	
204	2x2	Green	
200	2x2	Green	
225	2x2	Green	
324	2x2	Green	
223	2x2	Green	
322	2x2	Green	
221	2x2	Green	
320	2x2	Green	
217	2x2	Red	
316	2x2	Green	
215	2x2	Green	
314	2x2	Green	
213	2x2	Red	
312	2x2	Green	
209	2x2	Red	
308	2x2	Green	
207	2x2	Green	
306	2x2	Green	
203	2x2	Red	
302	2x2	Green	
201	2x2	Red	
300	2x2	Green	
325	2x2	Red	
424	2x2	Green	
323	2x2	Green	
422	2x2	Green	
321	2x2	Red	
420	2x2	Green	
309	2x2	Red	
408	2x2	Green	
307	2x2	Green	
406	2x2	Green	
305	2x2	Red	
404	2x2	Green	
303	2x2	Red	
400	2x2	Green	
301	2x2	Red	
425	2x2	Green	
524	2x2	Red	
423	2x2	Green	
522	2x2	Green	
421	2x2	Red	
520	2x2	Red	
407	2x2	Red	
508	2x2	Green	
405	2x2	Red	
504	2x2	Green	
401	2x2	Red	
500	2x2	Green	
523	2x2	Green	
624	2x2	Green	
622	2x2	Green	
521	2x2	Red	
620	2x2	Green	
509	2x2	Red	
608	2x2	Green	
507	2x2	Red	
606	2x2	Green	
505	2x2	Red	
604	2x2	Green	
501	2x2	Red	
602	2x2	Green	
501	2x2	Red	
600	2x2	Green	
625	2x2	Green	
722	2x2	Green	
623	2x2	Green	
720	2x2	Green	
621	2x2	Red	
718	2x2	Green	
609	2x2	Red	
708	2x2	Green	
607	2x2	Green	
706	2x2	Green	
605	2x2	Green	
705	2x2	Green	
603	2x2	Red	
702	2x2	Green	
601	2x2	Red	
700	2x2	Green	

**As of 6/11/19 – Floorplan Subject to Change.*

- Booth space (8'X10')
- One delegate registration with access to main conference sessions (excludes short symposia and short courses)
- One "booth only" personnel registration (no session access)
- Company listing in program materials – including contact information and 50-word description
- Corporate listing on the conference documentation and a web link back to your corporate website
- One-time mailing opportunity using 3rd party mail house – pre- & post-conference
- Discount for additional conference registrations for your company - maximum of 5
- 50% discount on advertising in the Program materials

Welcome Receptions

Themed Functions

Refreshment Breaks

Raffles & More!

SPONSORSHIP OPPORTUNITIES

CHI's comprehensive sponsorship packages allow you to achieve your objectives before, during, and long after the event. Maximize exposure to hard-to-reach decision-makers through the following sponsorship opportunities:

Podium Presentations – Available within the Main Agenda!

Showcase your solutions to a guaranteed, targeted audience through a 15- or 30-minute presentation during a specific conference program, breakfast, or lunch. Package includes exhibit space, on-site branding, and access to cooperative marketing efforts by CHI. For the luncheon option, lunches are delivered to attendees already seated in the main session room. Presentations do sell out early.



Branding and Promotional Opportunities

- Hotel Room Keys
- Track Receptions
- Game Card
- Footprint Trails
- Conference Tote Bags
- Literature Distribution (Tote Bag Insert or Chair Drop)
- Padfolios
- Conference Material Advertisement



Invitation-Only Dinner / Hospitality Suite

Sponsors will select their top prospects from the conference preregistration list for an evening of networking at the hotel or at a choice local venue. CHI will extend invitations, conduct follow-up and confirm attendees. The evening will be customized to meet with your specific objectives.



One-on-One Meetings

Work with us to identify your target prospects and we will schedule meetings for you. Think of us as your inside sales team with all your hottest leads in close reach. Opportunities sold on a very limited basis.



Drive Targeted Leads to Your Sales Team

CHI's Lead Generation Programs will help you to obtain more targeted, quality leads throughout the year. We will mine our database of over 800,000 life science professionals to your specific needs. We guarantee a minimum of 100 leads per program!

Opportunities include:

- White Papers
- Webinars
- Podcasts
- Custom Market Research Survey
- eBooks



#PTK20

CHI-PepTalk.com

INQUIRE ABOUT SPONSORSHIP

PEPTALK

THE PROTEIN SCIENCE WEEK

Reach
Delegates
from These
Industry Leading
Companies
and Much More!

absolute
antibody

protein
simple

gsk

Lee

ThermoFisher
SCIENTIFIC

Bristol-Myers Squibb

Pfizer

UNCHAINED
LABS

Takeda

FairJourney
Biologics

FUJIFILM
Diosynth
biotechnologies

Roche

Janssen
Janssen-Cilag
or Johnson & Johnson

FORTÉBIO

BAYER

SANOFI

BERKELEY
LIGHTS

GE

ATUM

ABLEXIS
AlivaMab
DISCOVERY SERVICES

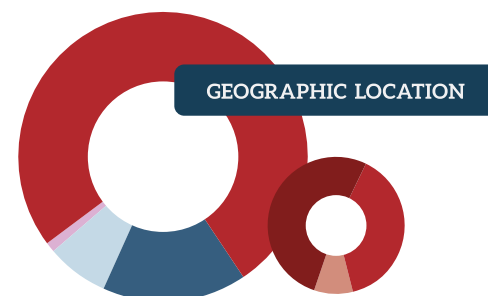
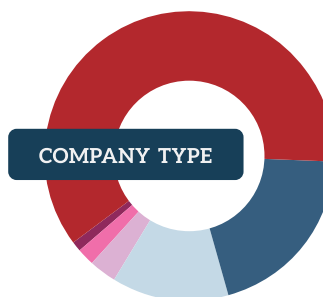
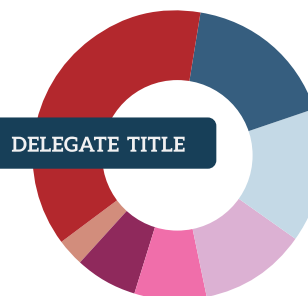
Shire

Merck

GenScript
Make Research Easy

absolute
antibody

2019 ATTENDEE DEMOGRAPHICS



INQUIRE ABOUT SPONSORSHIP



#PTK20 CHI-PepTalk.com

2019 SPONSORS & EXHIBITORS



- 908 Devices
- AbCellera
- Abgent, a WuXi AppTec Company
- Absolute Antibody Ltd
- ACROBiosystems
- Ajinomoto Co., Inc.
- Analytik Jena
- Aragen Bioscience, Inc.
- ATUM (formerly DNA2.0)
- Avacta Life Sciences
- Batavia Biosciences
- Benchling
- Biocytogen Boston Corp
- BioLegend
- Biopharma Technology LLC
- Biosensing Instrument
- Blue Heron Biotech, LLC.
- Bruker Optics
- BUCHI Corporation
- CAPRION BIOSCIENCES INC.
- Carterra
- Charles River Laboratories
- Chemglass Life Sciences
- CovalX
- Creoptix
- Daptics
- Digital Proteomics LLC
- Dotmatics
- Drug Delivery Experts
- Dynamic Biosensors Inc.
- Eisai, Inc.
- Expedeon Ltd
- Expression Systems LLC
- Fluid Imaging Technologies, Inc.
- ForteBio
- FUJIFILM Diosynth Biotechnologies
- Fusion Antibodies
- Gates Biomanufacturing Facility
- GE Healthcare
- Genedata
- GENEWIZ
- GenScript
- Glycotope GmbH
- Gore & Associates
- Halo Labs
- Icosagen Cell Factory
- ImmunoPrecise Antibodies Ltd.
- Infors USA
- Integrity Bio
- KANEKA
- KBI Biopharma
- Kempbio, Inc.
- Kuhner Shaker Inc
- LakePharma Inc.
- Lyophilization Technology, Inc.
- Malvern Instruments
- Mettler Toledo Rainin
- Nano Temper Technologies
- NanoCollect Biomedical
- Nanome
- Nicoya Lifesciences
- Ology Bioservices (CDMO) - Capable, Collaborative, Creative
- Otay Consulting
- Pall Biotech
- PerkinElmer
- Pfanstiehl, Inc.
- PhyNexus
- POLYPLUS TRANSFECTION
- Polysciences Inc.
- Postnova Analytics Inc.
- Precision Antibody
- Premas Biotech Pvt Ltd
- ProImmune Inc.
- ProteinBioSolutions
- Protein Dynamic Solutions
- ProteinSimple, a Bio-Techne brand
- ProZyme, Inc
- Purolite Life Sciences
- Rapid Novor Inc
- RedShiftBio
- Reichert Technologies
- RheoSense, Inc.
- RubrYc Therapeutics
- Sartorius Stedim Cellca GmbH
- SCIEX
- Sekisui
- Selexis SA
- SGI-DNA. Inc.
- Solentim
- Spectradyme LLC
- Spheryx. Inc.
- Synbio Technologies
- The Chinese Antibody Society
- Thermo Fisher Scientific
- Thomson Instrument Company
- Unchained Labs
- VALIDOGEN (formerly VTU Technology)
- Wacker Biotech
- WuXi Biologics
- Wyatt Technology



THE CHI SALES JOURNEY STARTS HERE

1



Dedicated PepTalk Sales Managers

Work with our Sales Managers to develop a customized sponsorship package specific to your marketing needs and budget.

2



Thought Leadership

Position your company's messaging using our many programs designed to effectively reach your target audience.

3



Pre-event Marketing & Promotion

Sign up early and ensure maximum exposure throughout the event marketing campaign. Work with our Marketing Manager to co-promote your presence at the event.

4



On-Site Branding & Experience

Work with the Advertising Manager and the Client Services team to maximize your brand awareness on-site, and to make sure all deliverables and deadlines are met.

5



Audience Development

Schedule on-site meetings with potential and existing clients using our Networking App and One-to-One Meetings service.

6



Have a Great Event!

Arrive onsite with your team to network, learn, and increase your sales pipeline.



RELATED CHI EVENTS INCLUDE:



Protein & Antibody Engineering Summit

18-22 NOVEMBER 2019 | LISBON, PORTUGAL

LISBON CONGRESS CENTER ▶ PegSummitEurope.com



The Essential Protein Engineering Summit

MAY 4-6, 2020 | BOSTON, MA

SEAPORT WORLD TRADE CENTER ▶ PegSummit.com

August 25-27, 2020 | Westin Washington DC City Center | Washington DC

^{2nd Annual} Bispecific Antibody Pipeline Congress

Paving the Way to Clinical Success

FOR ADDITIONAL INFORMATION, PLEASE CONTACT:

COMPANIES A-K

Jason Gerardi

Sr. Manager, Business Development

781-972-5452 | jgerardi@healthtech.com

COMPANIES L-Z:

Ashley Parsons

Manager, Business Development

781-972-1340 | ashleyparsons@healthtech.com



#PTK20 CHI-PepTalk.com

INQUIRE ABOUT SPONSORSHIP